



Targetfour

www.targetfour.com

Product Datasheet

Veritas

Backup Exec v9.0 for Windows Servers

For UK Pricing, Sales and Support please contact:

Targetfour Limited. Imperial House, 8 Oaklands Park, Wokingham, Berks. RG41 2FD

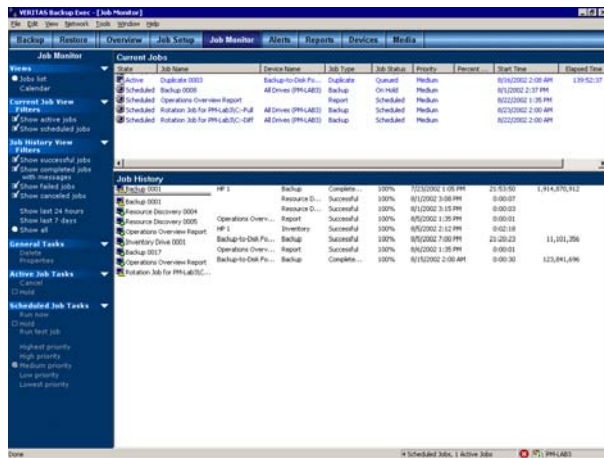
Tel. 0118 936 4300 Fax. 0118 936 4329

Email. sales@targetfour.com Website: www.targetfour.com

VERITAS™ Backup Exec™ 9.0 for Windows Servers

KEY BENEFITS

- Reduces operational cost in Microsoft Windows environments
- Simplifies installation, use, and manageability
- Increases Windows application availability
- Offers compatibility across all Microsoft Windows Servers, including Microsoft Windows™ Server 2003
- Delivers more functionality at the same low price



Graphical user interface eases installation, simplifies backup and recovery administration and consolidates management operations to a single console.



Worldwide Leader in Windows Data protection

IT administrators require a reliable, easy to use, data protection solution that is cost effective and scalable enough to grow from a single server into a multi-server storage area network SAN. The ideal solution must back up more data with less hardware, software, time, and, with fewer resources. The solution must be simple enough for the novice user to install and administer, yet flexible to meet the needs of large departmental workgroup or remote office environments.

VERITAS Backup Exec™ 9.0 for Windows Servers features a new graphical user interface that consolidates product operations within a browser-like view. An alternate true web-based administration console is also available when installed on Windows Server 2003. Easy-to-use wizards simplify data protection and recovery procedures for any level user and any size network. Optional high-performance agents support granular recovery of today's state-of-the-art messaging and database applications.

VERITAS Backup Exec's award-winning technology delivers proven reliability with a unique combination of features and first to market solutions designed to meet current and future data protection needs.

Product Highlights

- **Microsoft Support for Windows Servers** — Protection for the latest Microsoft Windows operating systems including Windows Server 2003.
- **NEW! Faster Backup, Recovery and Management of Exchange Servers** — Single Instance Storage of message attachments, incremental/differential mailbox backups and individual Public Folder Restore provide granularly and deliver faster backup and recovery of Exchange Servers. Automatic recreation of mailboxes and user accounts during a restore further streamline the recovery process – bringing data and users online faster.
- **NEW! Admin Plus Pack Option** — Delivers improved management of distributed backup servers with the ability to push install Backup Exec core product, its options and Job Templates to remote servers – includes 24 new reports.
- **NEW! Web-based Graphical User Interface** — Provides web based administration when installed on any Windows Server 2003 or Windows-powered NAS appliance running the Microsoft Server Appliance kit.
- **NEW! Superior Management Capabilities** — Enable administrators to test run a job before a regularly scheduled backup, confirm available tape capacity, track off-site media by vault location, designate the priority of one job over another and proactively set error handling rules to automate processes.

- **NEW! Faster Restores of Remote Windows Servers** — Using Specified Backup Network and Remote Agent Accelerator™ Technology, administrators reduce LAN traffic by isolating backup and restore jobs to a dedicated sub-network.
- **NEW! Faster Disaster Recovery** — Integration with Microsoft's Automated Server Recovery (ASR) using the native ASR API's helps to increase efficiency and speed disaster recovery operations on Windows XP or Windows Server 2003.

Reliability

Backup Exec is the ideal data protection solution for any type of Windows Server environment. Its proven, innovative architecture fully incorporates Microsoft's design standards, including COM+, MAPI, VDI, Active Directory and WMI ensuring 100% compatibility with Microsoft's Windows Server operating systems. Backup Exec fully embraces Microsoft standards for certification with Windows Server 2003 ready solutions.

Reliability features include Automatic Job Retry, Cyclical Redundancy Check (CRC) Data Verify and Database Consistency Checking that assists in maintaining data integrity with high-speed verification. New alert filtering and history capabilities and enhanced notification setup provides complete flexibility in specification of recipients. Job Test Run checks tape capacity, user credentials and other criteria to identify potential problems that can prevent successful job completion and notifies the administrator via e-mail, pager/phone or on the administration console.

Ease of Use

VERITAS Backup Exec's features are easy to use and deliver powerful functionality required for managing more complex networks. Installation prompts administrators to answer all the key questions during the set up process, streamlining the installation process.

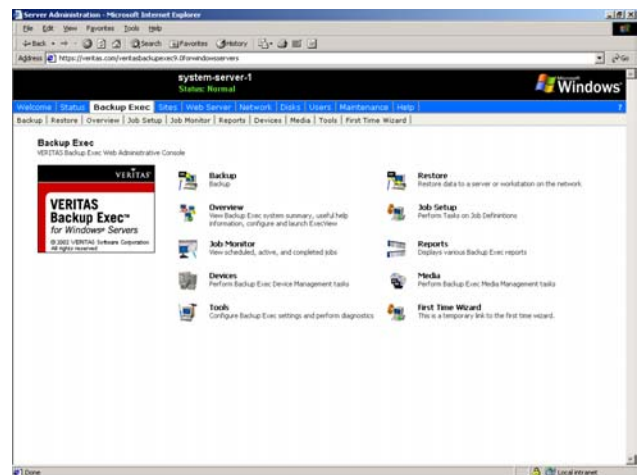
New Job Templates increase user efficiency allowing administrators to quickly set up or edit a template shared by multiple jobs, eliminating the need for individual job editing. Using the Admin Plus Pack Option*, administrators can centrally create and manage distributed Backup Exec servers and push install previously created jobs, templates and selection lists to the remote media servers, reducing the time needed to manage each server individually.

Other new and enhanced features include: Color Coded Job Logs that present a job summary, easy identification of success or failure conditions and provide greater detail of job history without having to view the entire log.

Automatic Discovery of new resources enables administrators to create a job for detecting new unprotected resources, including local and remote databases or volumes that are at risk and in need of backup. These features and many others available with Backup Exec simplify the daily management of complex backup and recovery operations.

Updated Administration Consoles

A new Web-based Graphical User Interface and snap-in for the Microsoft Server Appliance Kit (SAK) enables complete administration capabilities for local and remote protection of data to Windows Server 2003 or Windows-Powered NAS appliances.

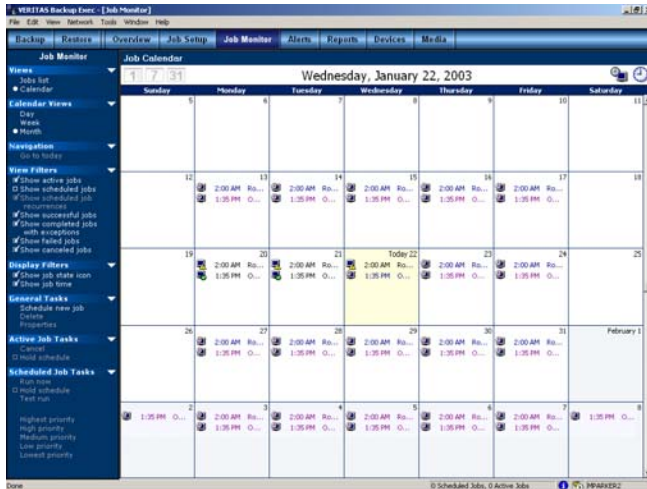


Backup Exec's Web Administration Console provides web-based administration for Windows Powered and Windows Server 2003

A newly redesigned 32-bit graphical user interface features an Information Desk View providing quick access to technical support information, on-line manuals and wizards that guide users through many common tasks, simplifying configuration, media rotation, device sharing and disaster recovery.

A new system summary screen provides details about backup jobs, devices, media and alerts status giving the administrator a single view of the most pertinent information. Enhanced System Services enable administrators to change passwords, start, stop or reconfigure service accounts on multiple Backup Exec servers simultaneously.

An Outlook-style calendar-based job scheduler with preview panes, a task pane and a tree view allow users to take full advantage of tabbed dialogs, property sheets, tool tips and right-click context sensitive menus.



Outlook-style Calendar-based scheduler simplifies job scheduling by enabling quick viewing in a single day, weekly or full month calendar format.

MAXIMUM PERFORMANCE

The Backup Exec architecture is designed to minimize network traffic and maximize throughput performance. The optional Remote Agents for Windows* and NetWare* servers use VERITAS' exclusive Agent Accelerator™ technology for distributed processing and source compression providing client access when protecting or restoring remote file and database servers.

New performance features and enhancements in this release of Backup Exec include the ability to:

- Leverage Windows Change Journal integration and use the Windows modified time instead of relying on the archive bit – allowing incremental and differential backups to run faster by eliminating the need to perform larger, full backups.
- Select a Network Interface Card to reroute backup and restores – reducing LAN traffic on the primary network and speeding system backup and recovery.
- Support removable media such as DVD–RW, ZIP, JAZ and CD-RW with Backup to Disk – now allowing configuration of size limits for managing disk capacity.
- Use the enhanced Advanced Open File Option to ensure all files on local and remote servers are protected even while in use. Integrates with Microsoft Volume Snapshot Service (VSS) components on Windows Server 2003 or VERITAS Volume Manager FlashSnap – providing alternate frozen image solutions to protect open files or SQL servers.
- Automate the complex recovery process for SQL Servers – VERITAS Intelligent Disaster Recovery Option uses copies of the Master and Model database to start SQL Server, allowing a single pass restore and eliminating the need to reinstall the SQL application.

Centralized Administration

For highly distributed backup operations, Backup Exec's ExecView Application provides remote monitoring and administration of individual Backup Exec servers from any Windows server or workstation. The web-based ExecView feature, accessible from the user interface, centrally monitors the activities of all Backup Exec servers running on Windows or NetWare servers, over the LAN or WAN from any Web browser.

Exercise greater control of remote Backup Exec servers on the network with the new Admin Plus Pack Option* — providing the ability to clone and remotely install media servers as well as copy jobs, selection lists and job templates between media servers. The Admin Plus Pack Option also delivers 24 new management reports and advanced capabilities such as report scheduling and e-mailing to identified recipients.

Additional Disaster Recovery Protection

Proactive preparedness is the key to ensure that business-critical data is readily available in the event of a disaster. The new data duplication feature automatically creates a secondary copy of any backup media for maintaining on-site and off-site copies with different data retention periods — ideal for disaster recovery data management.

The Intelligent Disaster Recovery Option* integrates directly with Microsoft's Automated System Recovery (ASR) functionality in Windows Server 2003 and Windows XP to provide disaster recovery on Windows servers.

Additionally, the Intelligent Disaster Recovery Option integrates directly with daily backups to provide wizard-based disaster recovery of local and remote Windows servers. The restoration process can be initiated via diskettes, CD/RW, or bootable tape to allow for system recovery without reinstalling the operating system. System files are restored from the most recent full, incremental, differential or working set backup.

Cluster-Aware Operation

Improve system fault tolerance by protecting highly available Microsoft Cluster Server (MSCS) machines with Backup Exec — leveraging Microsoft's Clustering APIs to provide automatic backup server failover in active/passive cluster deployments. Failure of the primary server invokes Backup Exec's checkpoint-restart feature to automatically begin operation on a secondary node at the point of failure, redirecting the current job and remaining scheduled jobs to the secondary node in the cluster. Protection of clustered active-active applications is also supported.

Advanced Device and Media Management (ADAMM)

Built-in media management and administration for Backup Exec extends beyond just writing data to the media — ADAMM prevents accidental overwrite of data and automates the storage device operations. Adding the Library Expansion Option* expands Backup Exec's capabilities to multi-drive tape library systems, which enables additional drives in a library to be accessed for expanding storage capacity.

By streamlining high-capacity backups with rule-based policies, jobs run concurrently and are automatically directed to the first available drive, resulting in optimized performance. The built-in wizards guide users through routine tasks such as device pooling, creating media sets and establishing Grandfather-Father-Son media rotation schemes. Other features include automatic media labeling, cleaning protection, user defined retention periods, media statistics, bar code reading and catalogs displaying either volume or media-centric views. Integrated slot partitioning enables users to partition slots within an autoloader or library and target jobs to a specific slot.

Support for Emerging Storage Technologies

VERITAS addresses the increasing demand for high performance and scalability of storage applications by developing support for the latest storage technology. As new "storage appliances" are being released to capture the explosion of information on today's growing networks, Backup Exec has expanded its ability to recognize and protect file and database application data on native and emulated Windows NAS storage devices. The SAN Shared Storage Option* enables LAN-free backup for Windows and NetWare servers over a fibre-channel network, enabling improved tape device sharing, reduced network traffic and increased backup speeds.

VERITAS Backup Exec Options and Agents

Backup Exec is the award winning solution for high performance, reliable Windows data protection, and the most comprehensive solution for growing and upgrading networks. Backup Exec can be expanded with database protection and storage management solution tools for the diverse application needs of growing network environments in all industries.

Easily integrate "hot backups" of today's business critical, 24x7 groupware, database, and file/data applications server operations into scheduled network backups with the optional Backup Exec groupware and database agents.

AVAILABLE AGENTS AND OPTIONS SOLD SEPARATELY INCLUDE:

Media Server Options

Exercise greater control of storage resources and alternate backup techniques.

- **NEW!** Admin Plus Pack Option
- **ENHANCED!** Advanced Open File Option**
- Intelligent Image Option**

Remote Client Access Options

Connect and protect remote Microsoft Windows and Novell NetWare servers on the network.

- Remote Agent Client Access License (CAL) for NetWare Servers
- Remote Agent Client Access License (CAL) for Windows Servers

Online Groupware Agents

Non-disruptive protection for corporate e-mail messaging and knowledgebase applications.

- Agent for Microsoft Exchange Server**
- Agent for Microsoft SharePoint Portal Server**
- Agent for Lotus Domino**

Online Database Agents

Protect and recover mission-critical database applications.

- Agent for Microsoft SQL**
- Agent for Oracle**
- Agent for R/3 for Oracle**

Disaster Recovery Options

Total recovery of local or remote systems.

- Intelligent Disaster Recovery™ Option

Storage Options

Used for expanding to larger media storage devices or sharing storage resources over a SAN.

- Library Expansion Option
- SAN Shared Storage Option
- Tivoli Storage Manager Option

Features	Benefits
Windows Compatibility	
<ul style="list-style-type: none"> • ENHANCED! Support for Microsoft Windows Servers 	<ul style="list-style-type: none"> • Microsoft certified support for Windows NT and Windows 2000 Server, Advanced Server and Datacenter as well as support for Windows Server 2003 Family reduces costs, deployment time and ensures compatibility and reliability.
<ul style="list-style-type: none"> • Full Windows File System Support 	<ul style="list-style-type: none"> • Windows 2000 and or Windows Server 2003 File System Support for FAT 16/32, VFAT, NTFS, CDFS, and UDF including Macintosh and POSIX file systems delivers maximum flexibility for diverse client support.
<ul style="list-style-type: none"> • ENHANCED! Windows NT Registry, Windows 2000 and Windows Server 2003 System State protection 	<ul style="list-style-type: none"> • VERITAS Agent Accelerator technology protects all operating system information including Active Directory of local or remote servers and workstations.
<ul style="list-style-type: none"> • NEW! Cluster Configuration Wizard 	<ul style="list-style-type: none"> • Eases installation and configuration of Backup Exec in a Microsoft Cluster Server (MSCS) environment and provides automatic cascading failover for up to 8-node clusters and also protects clustered applications running on the Microsoft Cluster Server (MSCS).
<ul style="list-style-type: none"> • Microsoft Tape Format Read/Write 	<ul style="list-style-type: none"> • Allow the interchange of media with any version of the Windows Server backup applet.
Flexibility & Ease of Use	
<ul style="list-style-type: none"> • NEW! Graphical User Interface 	<ul style="list-style-type: none"> • Provides a browser-like logical layout for ease of use and enables customization of the columns, layout and type of information to be displayed.
<ul style="list-style-type: none"> • NEW! Web-based Browser Interface 	<ul style="list-style-type: none"> • Simplifies management of Backup Exec running on Windows Server 2003 and Windows-Powered NAS appliances.
<ul style="list-style-type: none"> • NEW! Task Wizards 	<ul style="list-style-type: none"> • Facilitate installation, setup, backup, recovery, media management, disaster preparation, cluster installation and agent configuration.
<ul style="list-style-type: none"> • ENHANCED! ExecView Server Monitoring Tool 	<ul style="list-style-type: none"> • Centralizes the monitoring of backup job activity across multiple Backup Exec for Windows and/or Backup Exec for NetWare servers.
<ul style="list-style-type: none"> • ENHANCED! Backup via Specified Backup Network 	<ul style="list-style-type: none"> • Reduces LAN traffic by isolating backup and restore operations to a sub-network.
<ul style="list-style-type: none"> • One-Button Backup 	<ul style="list-style-type: none"> • Speeds execution of a complete local system backup without having to define a backup job.
<ul style="list-style-type: none"> • NEW! Outlook-style Calendar Based Job Scheduler 	<ul style="list-style-type: none"> • Facilitates viewing of job scheduling and management of backup operations.
<ul style="list-style-type: none"> • NEW! Admin Plus Pack Option 	<ul style="list-style-type: none"> • Facilitates installation, configuration of remote Backup Exec servers, cloning, copying jobs, selection lists and job templates between media servers. Includes 24 advanced reports.
<ul style="list-style-type: none"> • Job Retry 	<ul style="list-style-type: none"> • Automatically retries a failed job and reroutes jobs to alternate drives.
<ul style="list-style-type: none"> • ENHANCED! Automated Alert Notification and SNMP Support 	<ul style="list-style-type: none"> • Framework console notification via Microsoft Exchange, Lotus Notes or SMTP e-mail, pager, printer, net send broadcast, and network monitoring applications.
<ul style="list-style-type: none"> • Cyclical Redundancy Check 	<ul style="list-style-type: none"> • Helps to ensure reliability with high-speed data verification.
Advanced Device and Media Management	
<ul style="list-style-type: none"> • Backup to Disk 	<ul style="list-style-type: none"> • Delivers faster backups and restores using disk media, including hard drives, NAS appliances and RAID systems as storage media.
<ul style="list-style-type: none"> • Device Pooling, Cascading and Dynamic Load Balancing 	<ul style="list-style-type: none"> • Maximizes backup/restore performance and facilitates job failover.
<ul style="list-style-type: none"> • Automated Media Management 	<ul style="list-style-type: none"> • Enables easy set-up of media formatting, labeling, tracking, rotation, defining of retention periods and catalog viewing.
<ul style="list-style-type: none"> • Automated Log Files and Disk/Catalog Grooming 	<ul style="list-style-type: none"> • Frees hard disk space from inactive files.
<ul style="list-style-type: none"> • Autoloader/Library Slot Partitioning 	<ul style="list-style-type: none"> • Allows backup jobs to be targeted to specific slots within a tape autoloader or library; mix drive types within a tape library.
<ul style="list-style-type: none"> • NEW! System Summary Screen 	<ul style="list-style-type: none"> • Provides administrators with a central, consolidated view of the Backup Exec server status simplifying job management.
<ul style="list-style-type: none"> • NEW! VERITAS Update 	<ul style="list-style-type: none"> • Checks the VERITAS website at user specified intervals for any available Backup Exec updates informing the user of the latest patches or hot fixes available.

WORLDWIDE LEADER IN WINDOWS DATA PROTECTION

Minimum System Requirements

Operating System:

Microsoft Windows Server 2003 family
Microsoft Windows NT Small Business Server v4.5
Microsoft Windows NT Small Business Server 2000
Microsoft Windows NT Workstation v4.0 or Microsoft Windows NT Server Operating System v4.0; Service Pack 6a or higher
Microsoft Windows 2000 Professional
Microsoft Windows 2000 Server
Microsoft Windows 2000 Advanced Server
Microsoft Windows 2000 Datacenter Server
Microsoft Windows Server Appliance Kit (SAK) 2.0 or higher

Internet Browser:

Internet Explorer 5.01 or higher; v 5.5 is recommended

Processor:

Pentium system

Memory:

Required: 256 MB RAM required above operating system and application requirements
Recommended: 512 MB RAM (or more for better performance) above operating system and application requirements

Virtual Memory Recommendations:

20 MB above Windows recommended size for total paging file size (total for all disk volumes)

Disk Space:

550 MB hard disk space required after Microsoft Windows is installed (typical installation)
Backup Exec Database and Catalogs will require additional space

Minimum Video Settings:

800 x 600 Resolution, 256 colors

Other Hardware:

Network interface card or a virtual network adapter card
CD-ROM drive
(Recommended) A mouse
(optional for printer notification) Printer supported by Microsoft Windows
(optional for pager notification) Modem supported by Microsoft Windows

VERITAS Software Corporation

Corporate Headquarters
350 Ellis Street
Mountain View, CA 94043
650-527-8000 or 866-837-4827

Storage Hardware

Backup Exec supports unlimited standalone tape devices and can use removable or fixed disk storage for backup and restore.

Backup Exec provides support for a single robotic library drive. Support for additional robotic library drives is available by purchasing the Backup Exec Library Expansion Option. Refer to the Backup Exec hardware compatibility list at: http://support.veritas.com/dsl/dslselect_ddProduct_BEWNT.htm
For a complete list of supported SCSI controllers, refer to the Windows Hardware Compatibility list at: www.microsoft.com

Application Support

Backup Exec Agents and Options support most major applications. Refer to the Backup Exec application compatibility list at <http://seer.support.veritas.com/docs/237486.htm> for a complete application support list.

Supported Tape Formats

Microsoft Tape Format v1.0 (read and write)
Backup Exec *for NetWare* (read)
CA ARCserve v6.x and ARCserve 2000 for Windows NT and Windows 2000 (read)
CA ARCserve v4.x, 5.x and 6.x for NetWare (read)
SMS/SIDF (read)

Backup Exec 9.0 for Windows Servers

Backup Exec installs on and protects Windows NT 4.0 Workstation/Server, Windows 2000 Professional, Windows 2000 Server, Windows 2000 Datacenter Server, Windows 2000 Advanced Server or Windows Server 2003 Family. Client protection includes remote Windows 98/ME, Windows NT 4.0 Workstation, and Windows 2000 Professional and XP Professional machines, as well as Macintosh, UNIX, and Linux.

* Option/Agent sold separately

**These options include a Remote Agent (CAL) for Windows Servers

For more information consult the Backup Exec Tech Support page at:
http://support.veritas.com/menu_ddProduct_BEWNT.htm.

For additional information about VERITAS Software, its products, or the location of an office near you, please call our corporate headquarters or visit our Web site at www.veritas.com.